

2MASS J18552552-0251457

alternative identifiers:

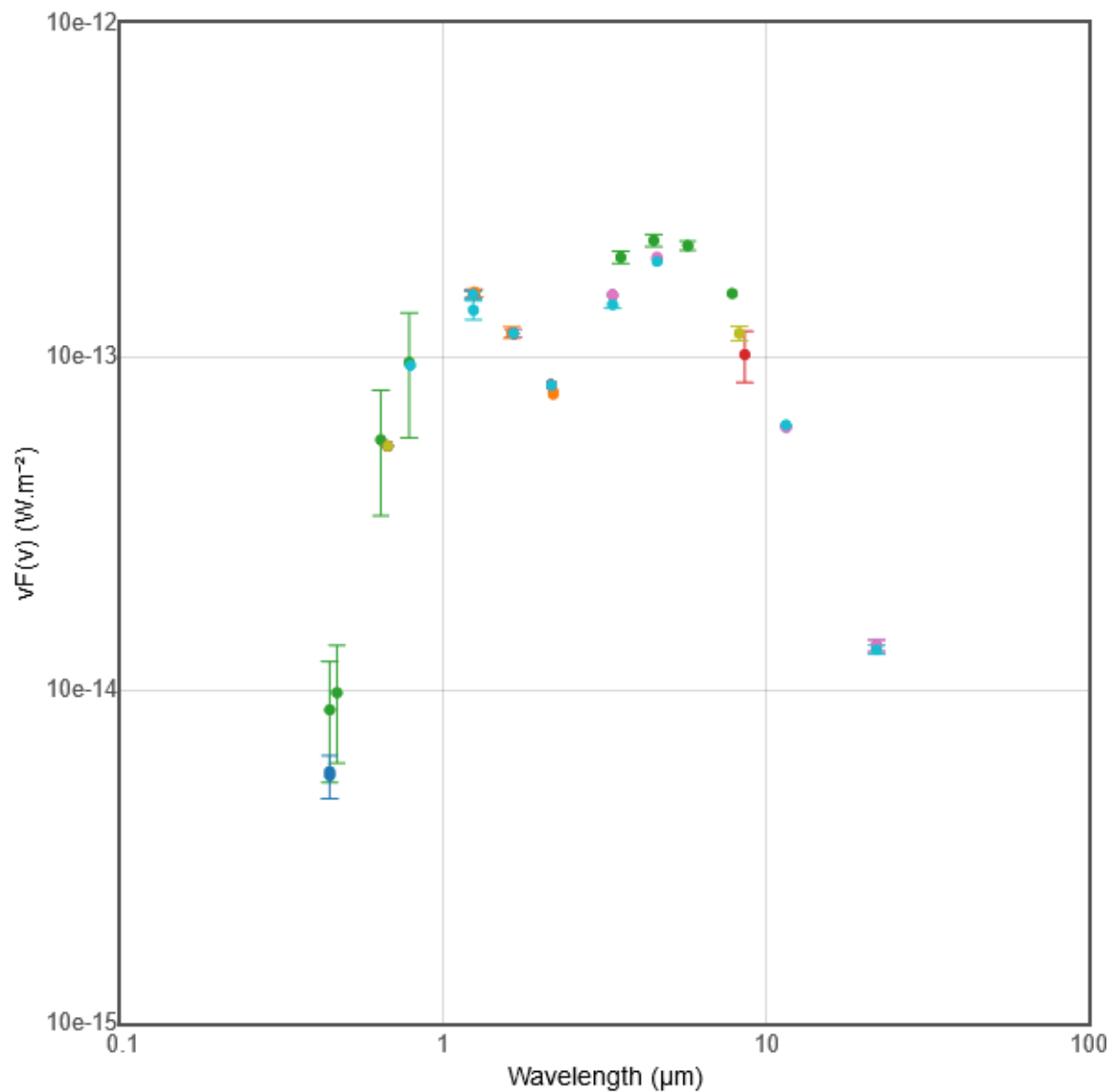
UCAC4 436-082522

2MASS J18552552-0251457

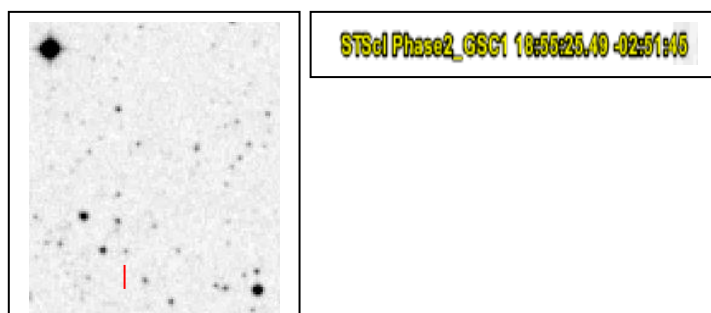
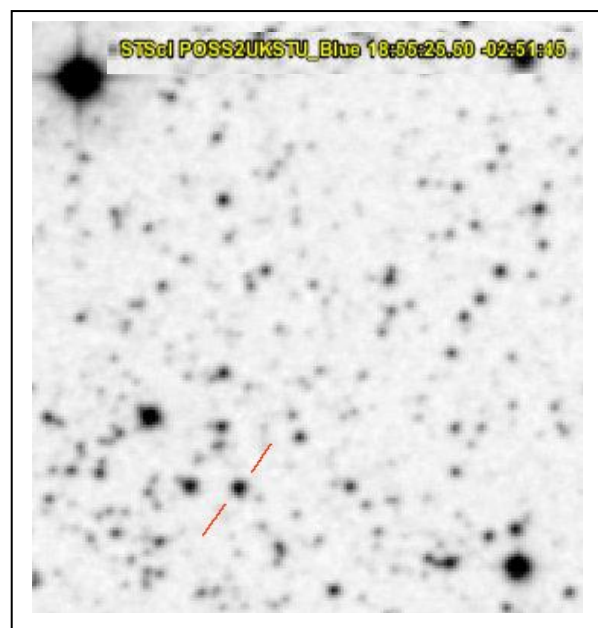
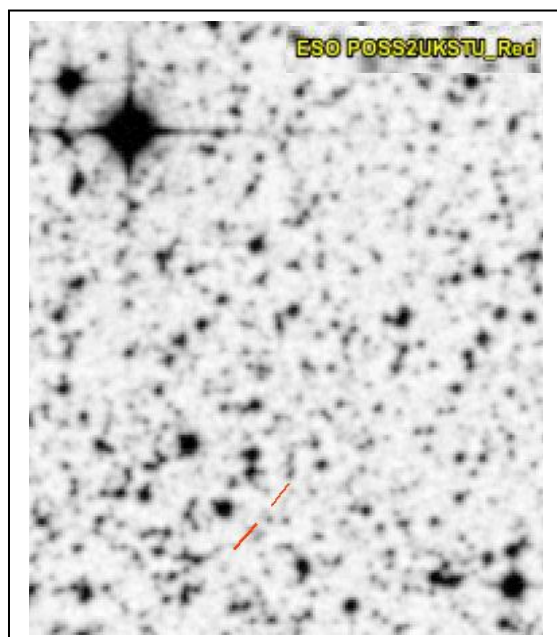
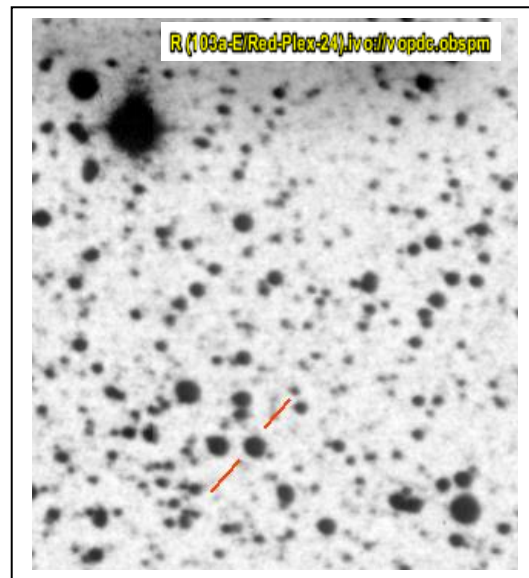
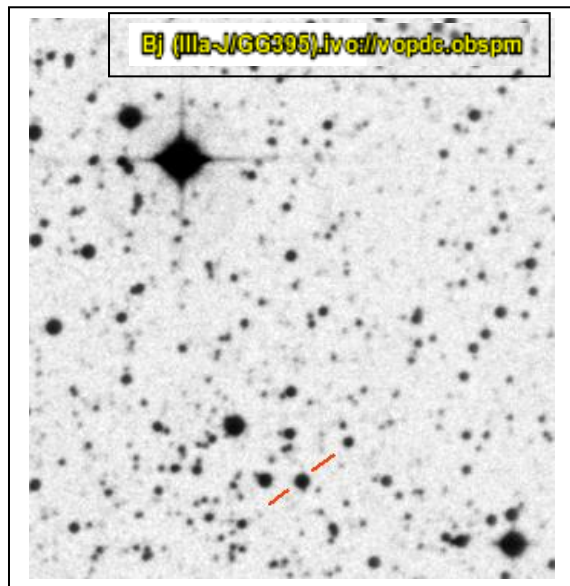
GDS_J1855255-025145

USNO-B1.0 0871-0555589

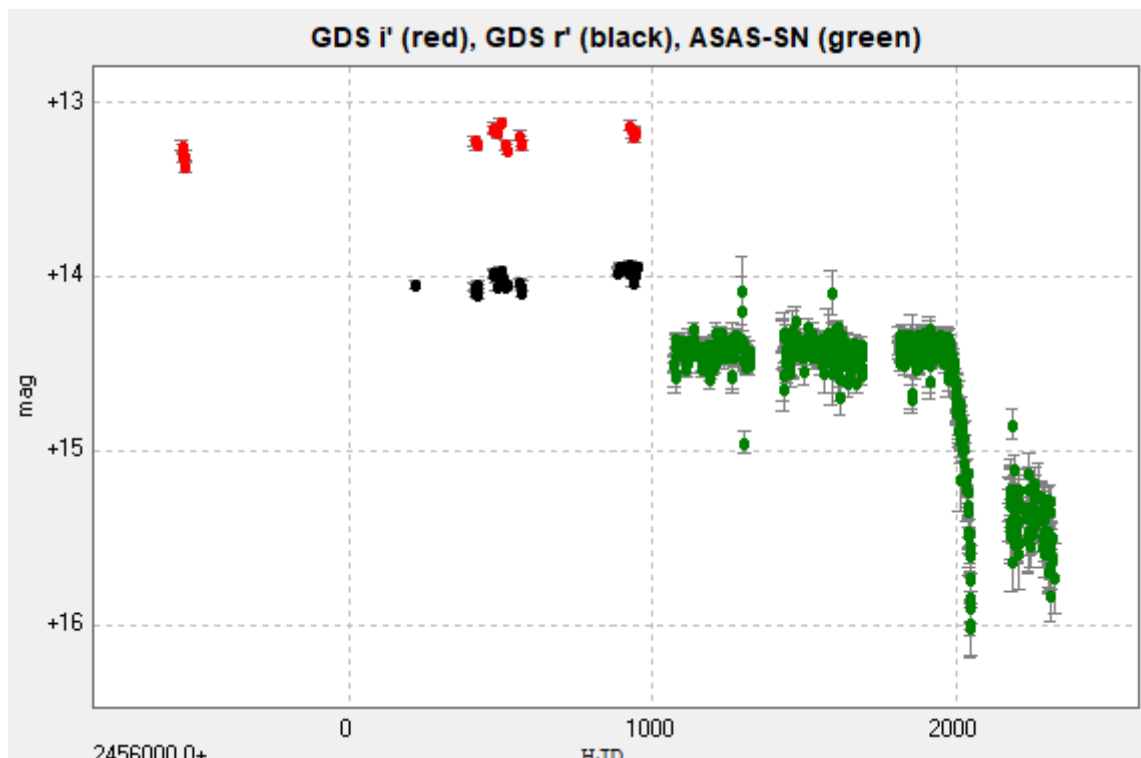
- Identified as variable star of undetermined type by Hackstein et al. (2015AN....336..590H).
- Near- and mid-infrared properties in agreement with an RCB classification – the star is contained in the catalogue of RCB candidates by Tisserand et al. (2012A&A...539A..51T).
- The SED (shown below; created using Vizier Photometry viewer) is made up of two distinct blackbodies (stellar component, circumstellar shell?).



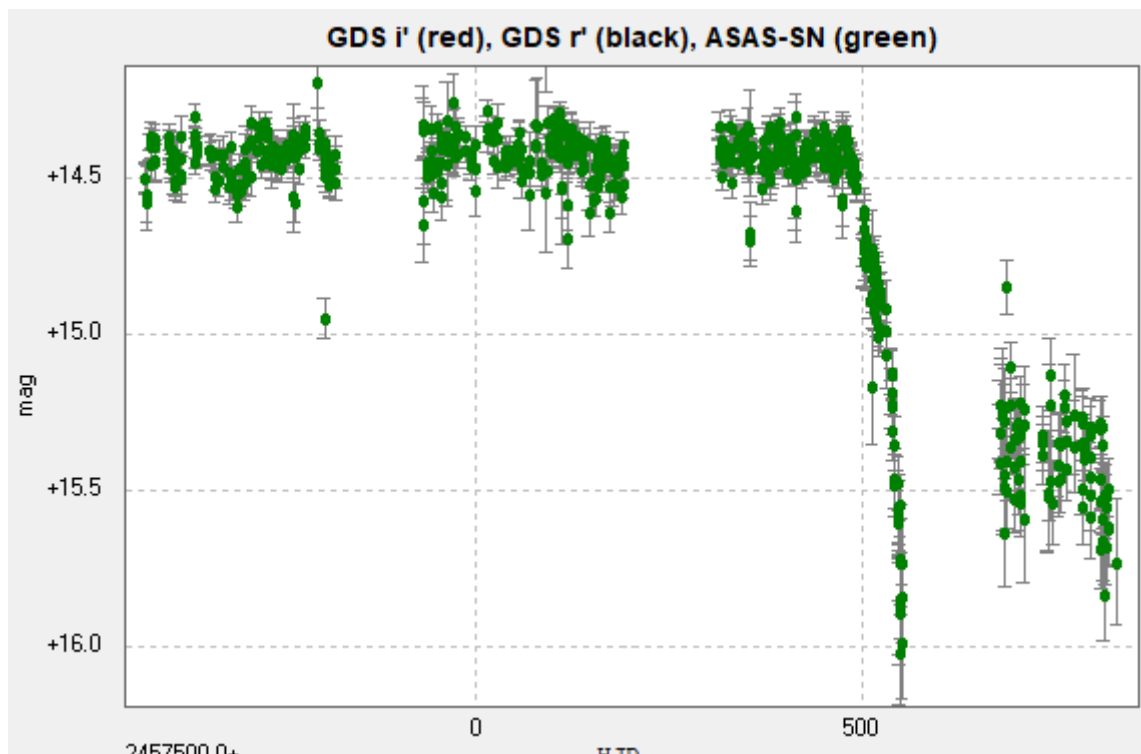
- An investigation of the corresponding field using ALADIN shows that the star is hardly visible on some plates while it is pretty bright on others (see below). Interestingly, it is about the same magnitude on Bj and R plates from VOPSAT, which would be very unusual for a red variable like e.g. a Mira.



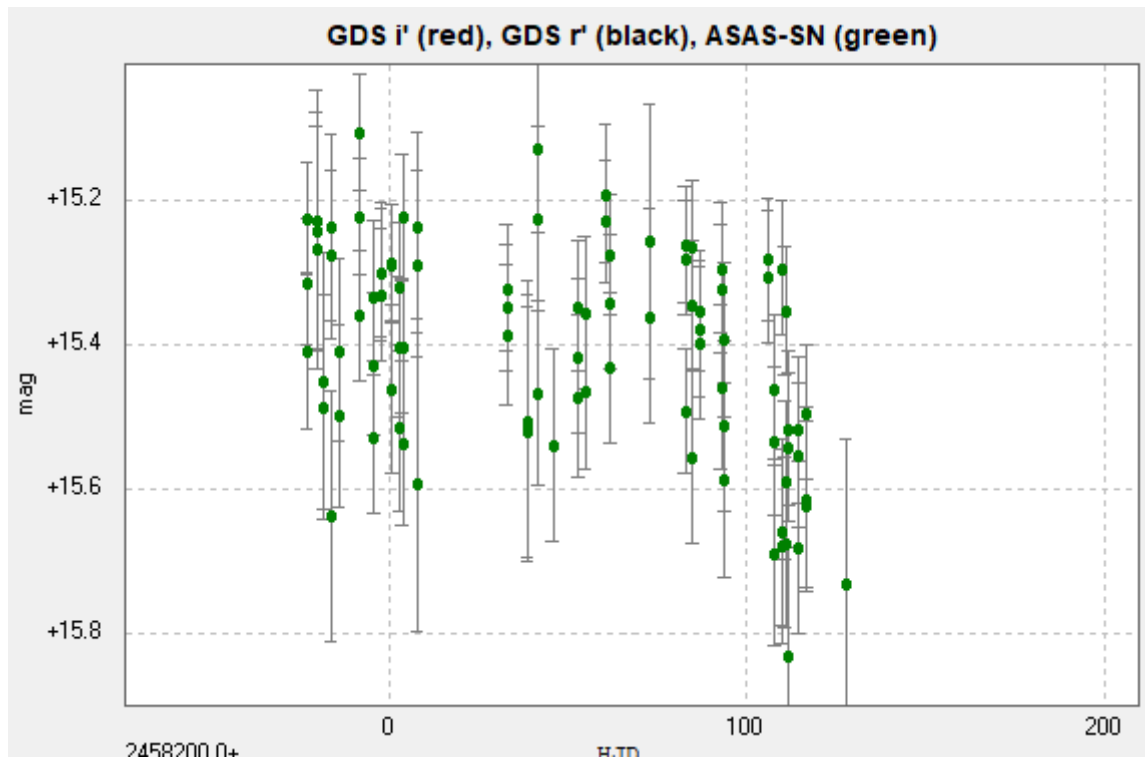
- ASAS-SN data show semi-regular variability at what appears to be maximum light, and a conspicuous drop in brightness at around HJD 2458000 (see light curves below).
- The most recent ASAS-SN data show the star at around 15.2 mag again (see zoomed-in light curves below).



(combined LC based on Bochum GDS data and ASAS-SN data)



(detailed view of ASAS-SN data)



zoom-in on the most recent ASAS-SN data