

January 09, 2008

Observations report: GSC 03778-00915

Other names: GSC 03778-00915, TYC 3778-915-1,

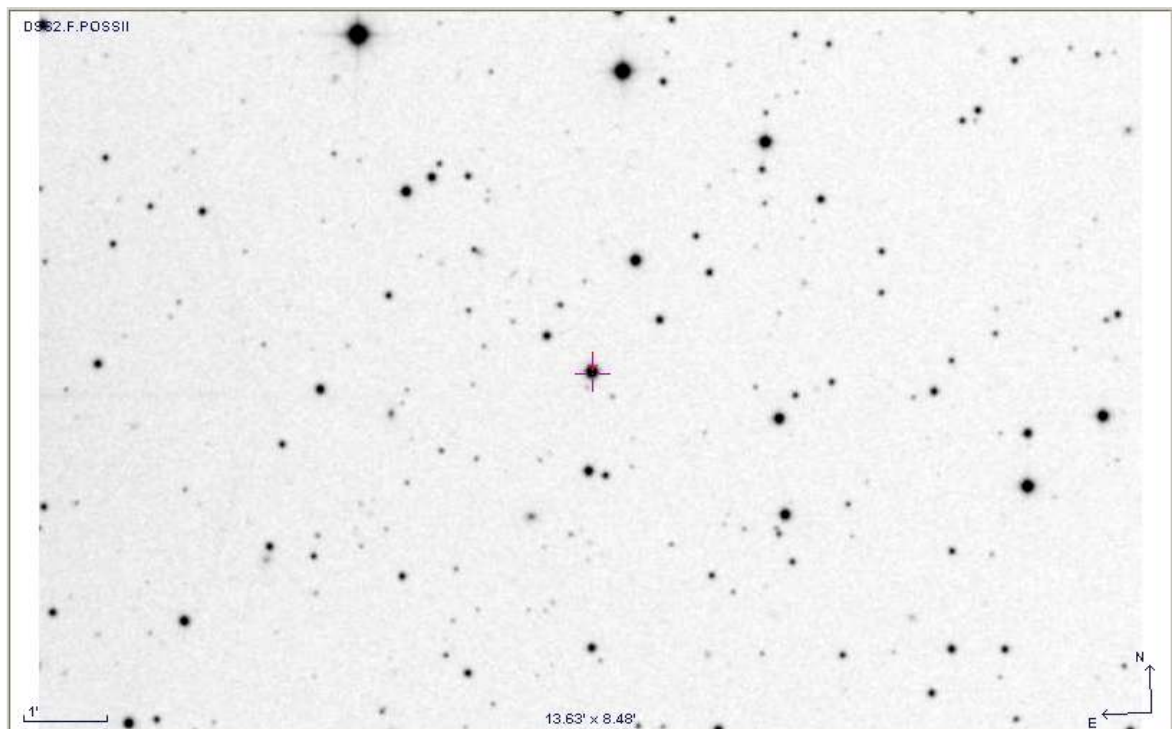
Observer: Gregor Srdoc

Abstract

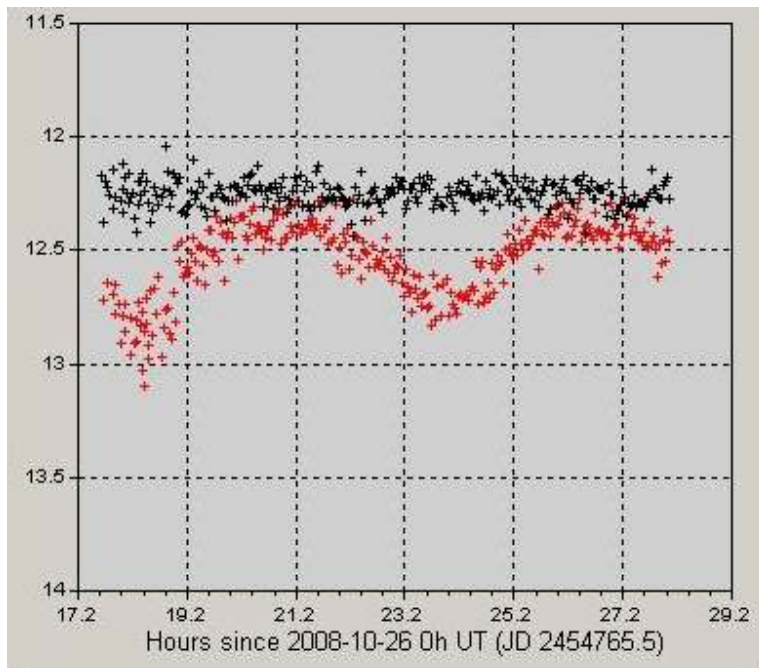
New EW type variable GSC 03778-00915 in constellation Lynx.

A new variable star GSC 03778-00915 ($V = 12.31$) in Lynx with coordinates RA=06 51 47.6, DEC=+59 26 49 (J2000) was found on CMOS images obtained with the 180mm f/2.8 telephoto lens (aperture=64mm) with unfiltered Canon EOS 400D camera. All images were bias, dark and flat subtracted. 289 photometric observations were acquired during one night on 2008.10.26. The exposure time was 120 seconds. JDCor: +0 sec. Data analysis give the period $P = 0.4217\text{d} \pm 0.0139\text{d}$. Mean amplitude is 0.489mag and epoch JD 2454766.2608.

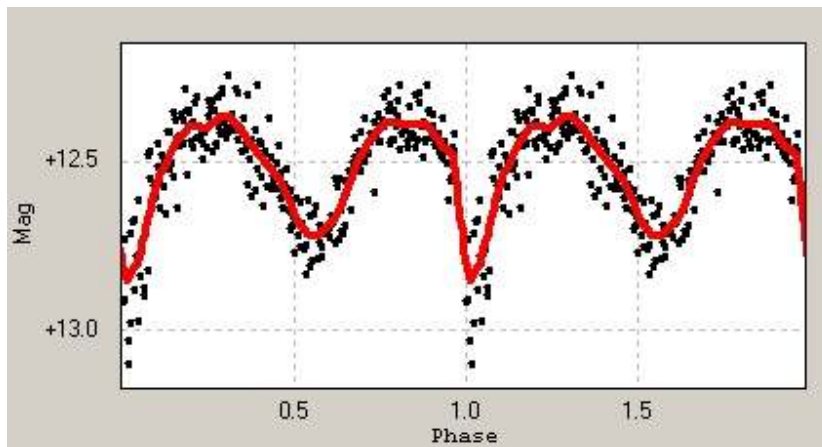
Finder chart:



2008.10.26 light curve of GSC 03778-00915 (red) and check star GSC 03778-00365 (black):



GSC 03778-00915 phase plot:



GSC 03778-00915 period:

